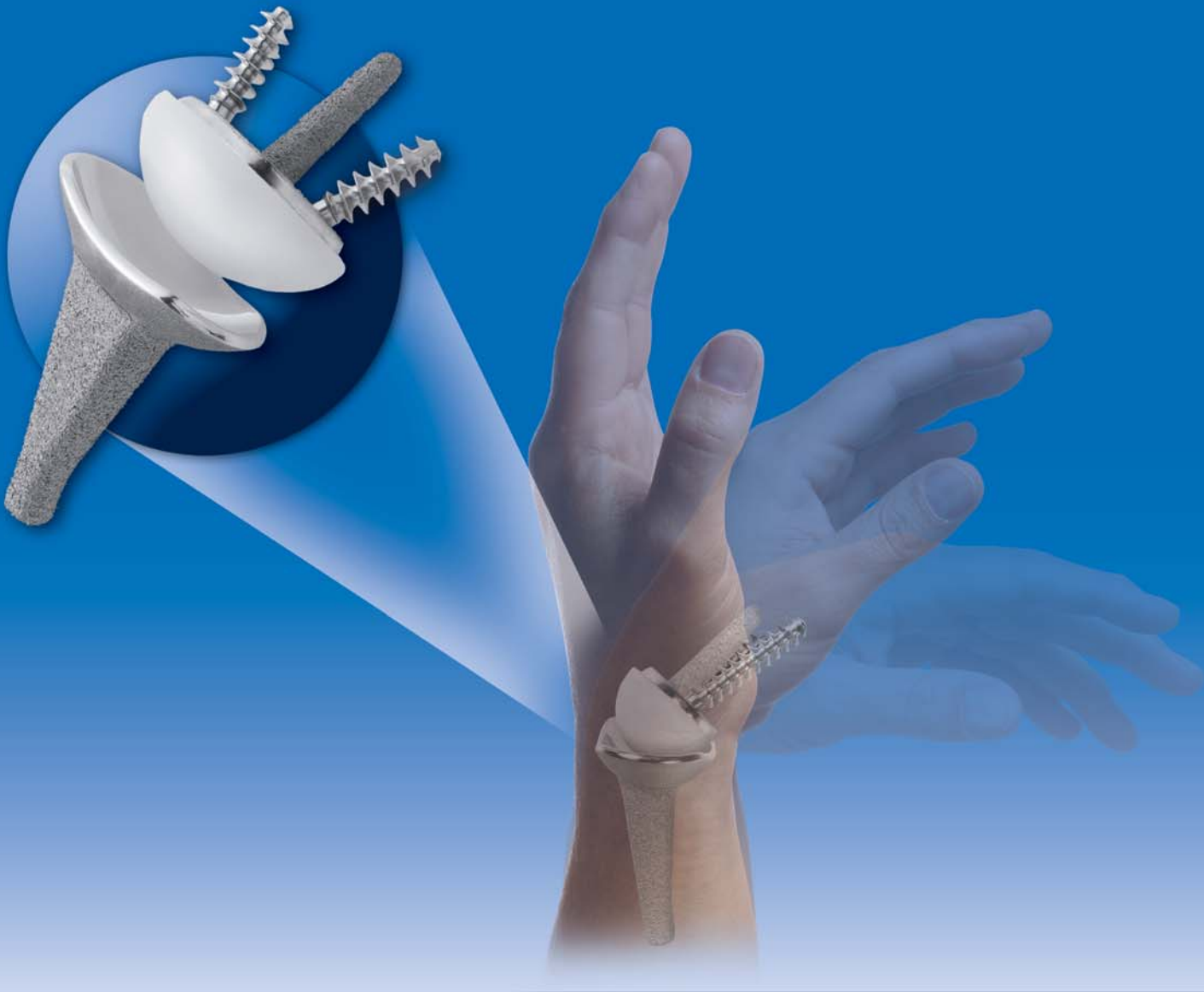


INNOVATIVE, SIMPLE, SECURE



RE▶LIEVE PAIN  
RE▶STORE MOTION

**RE▶MOTION** *PGT*<sup>TM</sup>  
TOTAL WRIST SYSTEM *WITH PRECISE GUIDANCE TECHNOLOGY*

# Precise Instrumentation

## PGT™ GUIDE COMPONENTS



**PGT Tab Assembly** – mounts directly into the **PGT Guide**. The assembly assures that the **PGT Guide** is positioned in optimal fashion.



**PGT Guide with PGT Radial Resurfacing Guide** – directs the radial burr across the surface of the radius in preparation for the radial implant.



**PGT Carpal Cutting Guide** – mounts directly to the **PGT Guide** to assure positioning; centered on the third metacarpal.



**PGT Guide with Radial Template** – provides ideal placement for guide wire insertion into the radius

## PGT CARPAL COMPONENTS

**PGT Carpal Template** – used to provide alignment for pre-drilling and screw fixation into the carpal portion of the wrist.

**PGT Metacarpal Drill Guide** – used to align the drill bit with the shaft of the metacarpal for ideal screw placement.



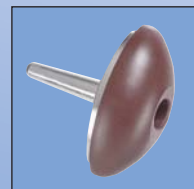
**PGT Metacarpal Drill Guide with Carpal Ball Trial**



**Carpal Ball Trials** – neutral and plus, small; neutral and plus, medium; neutral and plus, large



**Carpal Component Trials** – Small, medium and large



## PGT RADIAL COMPONENTS



**PGT Radial Broach** – right and left just like the radial component



**Radial Trials** – right and left, small; right and left, medium; right and left, large.



**PGT Radial Counterbore Drill** – expands the pilot hole in the radius to create a larger opening to start broaching.

# An Innovative Design...

## A Superior Implant

- All metallic RE-MOTION™ components are made from Cobalt Chrome (CoCr), which provides an optimal articulating surface with the polyethylene carpal ball
- Titanium (CPTi) coating on radial and carpal components offers a receptive surface for bony in-growth
- 3 Point Fixation with 2 CoCr cancellous screws and CPTi coated carpal stem provides definitive stability
- Cement-optional applications available

## Keys to Successful Results

- **Mobile Bearing**  
Carpal component allows for 10° of axial rotation, which disperse torsional forces as they are transmitted across the wrist and helps to promote stability
- **Minimal Bone Resection**  
Surface replacement design allows for minimal bone resection and preserves soft tissue and long-term surgical options
- **Deep Articular Radial Cup**  
Resists subluxation and enhances radial and carpal component stability
- **Preservation of Surrounding Anatomy**  
Conserving distal ulna and ligamentous structures maintains normal wrist kinematics

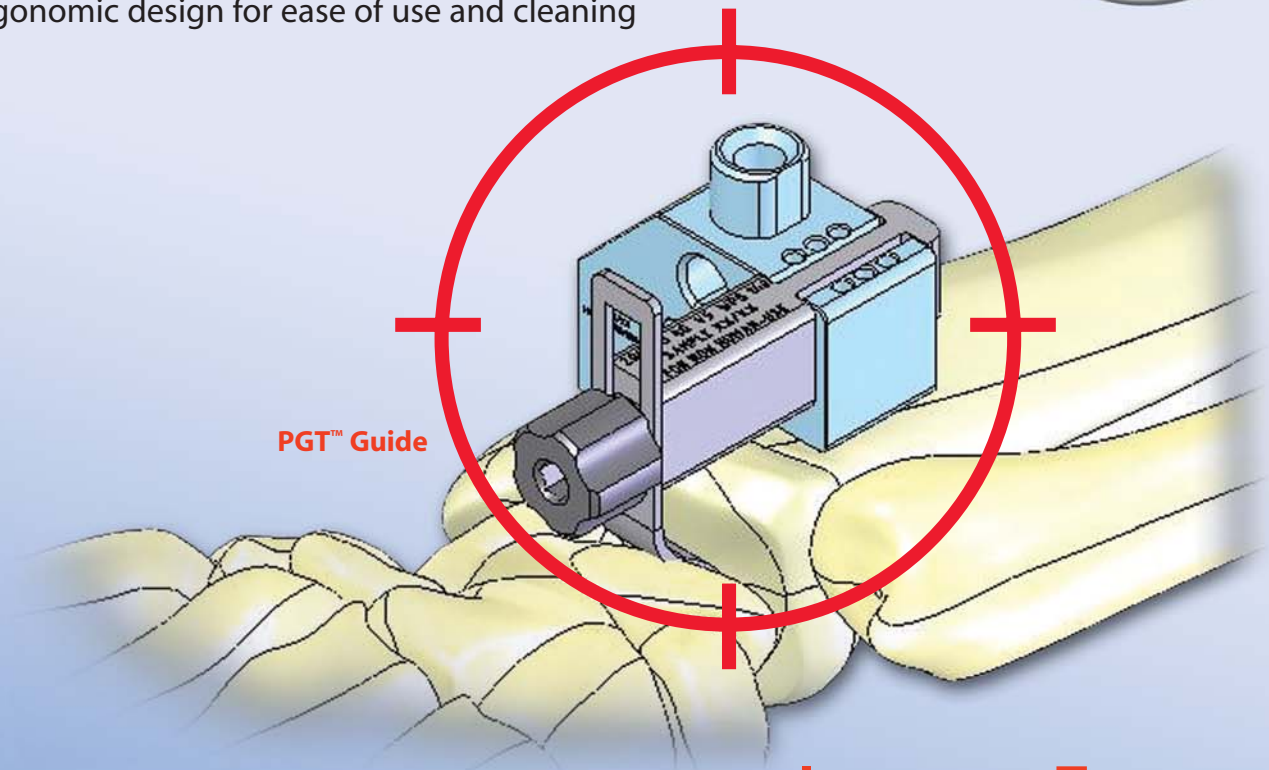


*An innovative total wrist system,  
supported by precise instrumentation:  
it will foster a return to normal activity for all patients  
with reproducible results.*

# Precise Guidance Technology™ ...

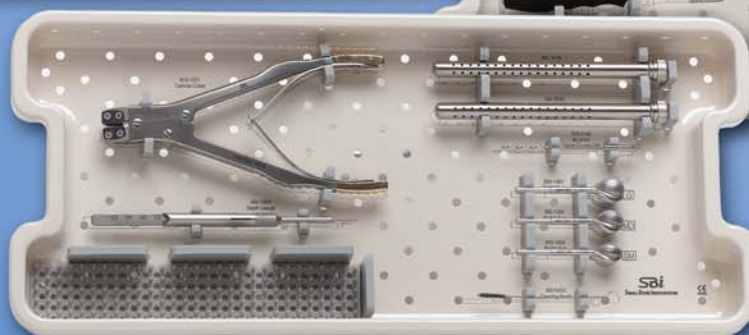
## Delivering Consistent Surgical Results with Precise Guidance Technology

- Total Wrist technique that is simple and repeatable
- Consistency in treating varying patient anatomies and pathologies
- Ergonomic design for ease of use and cleaning



PGT™ Guide

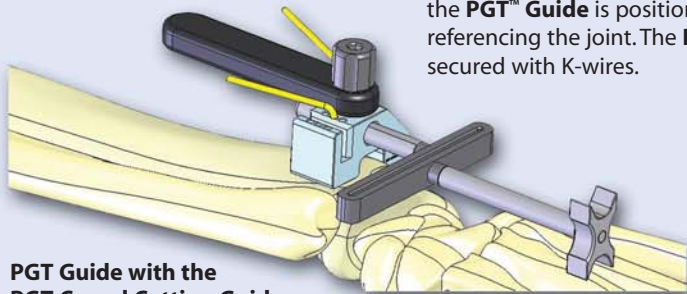
**INNOVATIVE TOTAL  
WRIST INSTRUMENTS  
BUILT FOR SUCCESS**



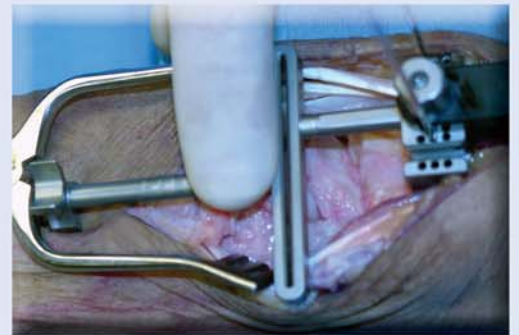
# Reproducible Results



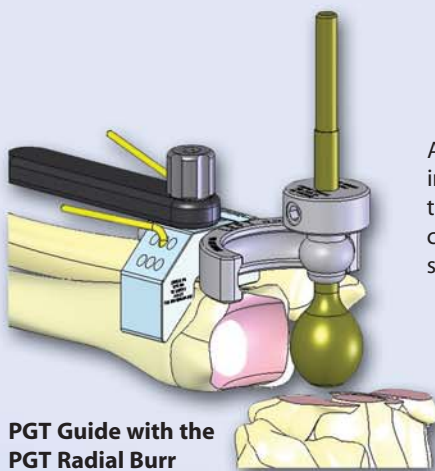
To gain a proper anatomical starting point, the **PGT™ Guide** is positioned using a spacer referencing the joint. The **PGT Guide** is then secured with K-wires.



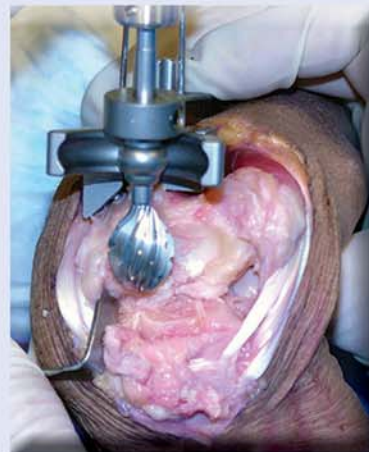
**PGT Guide with the PGT Carpal Cutting Guide**



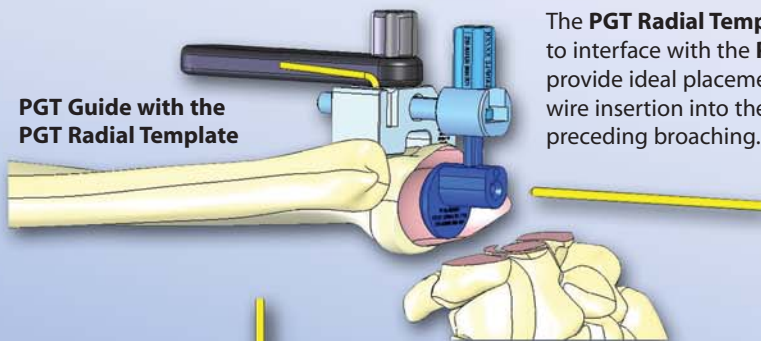
A gauged, precision jig and burr are loaded into the **PGT Guide** and used to resurface the joint surface of the radius. The burr's contour is designed to exactly match the shape of the implant.



**PGT Guide with the PGT Radial Burr**



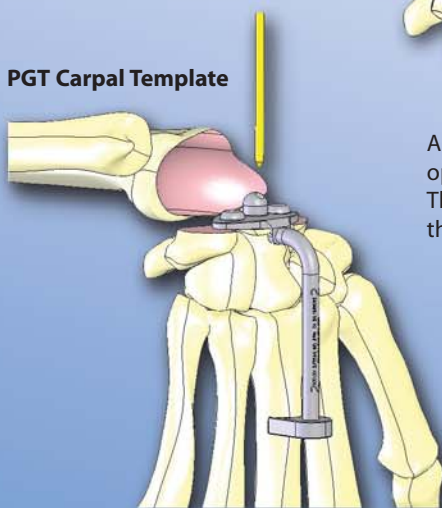
The **PGT Radial Template** is designed to interface with the **PGT Guide** to provide ideal placement for guide wire insertion into the radius preceding broaching.



**PGT Guide with the PGT Radial Template**



**PGT Carpal Template**



A **PGT Carpal Template** is provided to facilitate optimal pre-drilling of the carpal post and screws. The **PGT Metacarpal Drill Guide** can be used with the Template to accurately align the carpal screws.



# One Success Story...

## From Years of Experience



This post-operative X-Ray is from Dr Amit Gupta, MD University of Louisville, Louisville, KY. Dr Gupta is Co-Designer of the RE-MOTION Total Wrist System. This film is of a 61 year-old female patient who suffered from Post-Traumatic Arthritis. Note there was no resection of the radius and the complete DRUJ remains intact. The carpal and radial components of the implant are in precise alignment and the Carpal Ball is seated almost entirely into the radial component.

INNOVATIVE, SIMPLE, SECURE

**SBi**

**SMALL BONE INNOVATIONS**

Small Bone Innovations, Inc.  
1380 South Pennsylvania Ave.  
Morrisville, PA 19067  
(215) 428-1791 / Fax (215) 428-1795  
SBI Customer Service: (800) 778-8837  
Technical Support: (866) SBI-TIPS  
[www.totalsmallbone.com](http://www.totalsmallbone.com)

Small Bone Innovations International  
ZA Les Bruyères - BP 28  
01960 Péronnas, France  
Tel: +33 (0) 474 21 58 19  
Fax: +33 (0) 474 21 43 12