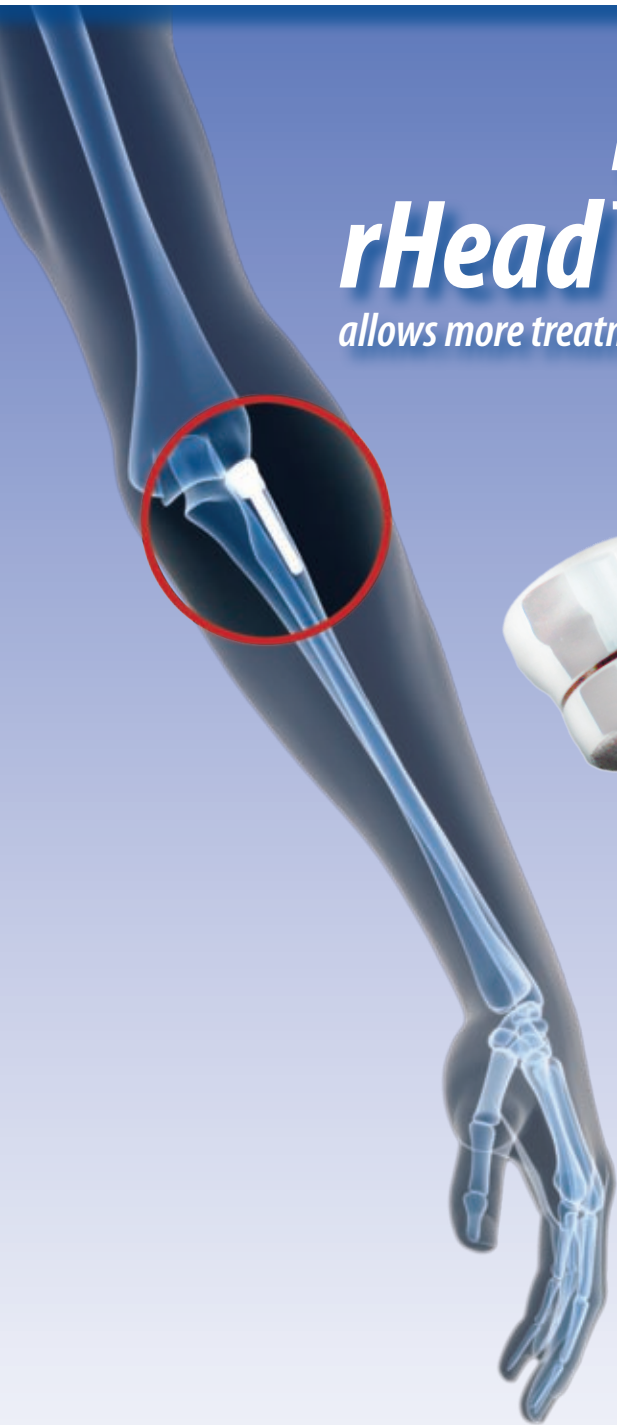




Introducing the *rHead™ Extended Stem*

*allows more treatment options for elbow reconstruction surgery**



*Longer stem design provides stability
for radial head replacements*

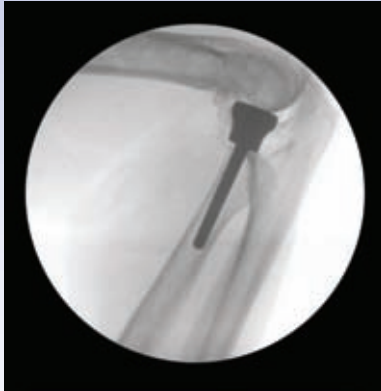
- 50 mm length with plasma coating for enhanced fixation
- Angled collar accommodates the radial head anatomy
- Modular with the rHead, radial head implant system

S*B*i
SMALL BONE INNOVATIONS, INC.

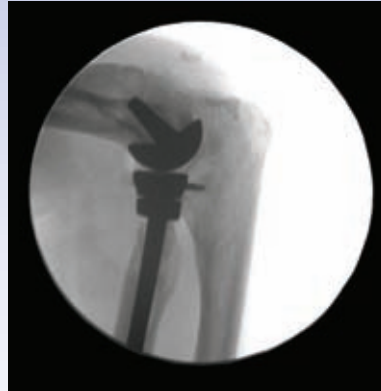
To learn more please visit
www.totalsmallbone.com

Treatment versatility

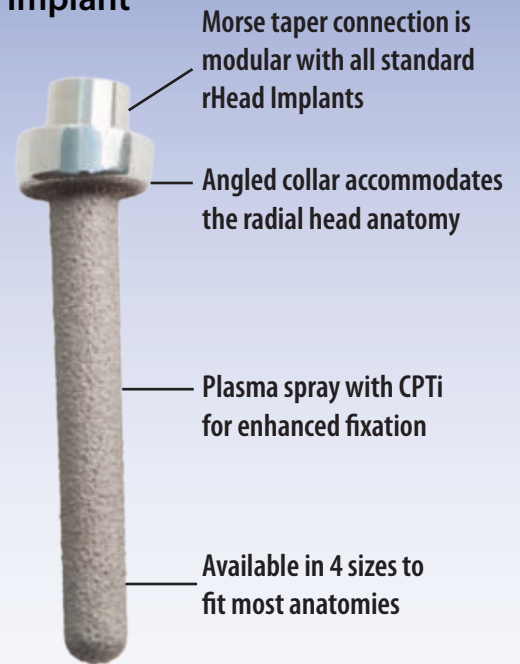
- Indicated for revision reconstruction cases
- Compatible with the UNI-Elbow™, Radio Capitellum implant*
- Use as a primary replacement for acute fractures
- Cleared for press-fit or cemented use



rHead Extended Stem with
rHead Standard Implant



rHead Extended Stem used
with the Uni-Elbow™



INDICATIONS – for use when used with a hemi-elbow implant:

- rHead, rHead Recon, and rHead Lateral Implants are intended for replacement of the proximal end of the radius:
1. Replacement of the radial head for degenerative, or post-traumatic disabilities presenting pain, crepitation and decreased motion at the radiohumeral and or proximal radio-ulnar joint with:
 - a. Joint destruction or subluxation visible on x-ray
 - b. Resistance to conservative treatment
 2. Primary replacement after fracture of the radial head

3. Symptomatic sequelae after radial head resection
4. Revision following failed radial head arthroplasty

INDICATIONS – for use when used with a UNI-Elbow implant:

- The SBi Radio-Capitellar implant is indicated for use in the elbow for reduction or relief of pain and/ or improved elbow function in skeletally mature patients with the following conditions:
1. Non-inflammatory degenerative joint disease including osteo-arthritis or traumatic arthritis
 2. Inflammatory degenerative joint disease including

- rheumatoid arthritis
3. Correction of functional deformity
 4. Revision procedures where other treatments and devices have failed
 5. Treatment of fractures that are unmanageable using other technologies

CONTRAINDICATIONS

1. Inadequate skin or musculotendinous system
2. Growing patients with open epiphyses
3. Previous open fracture or infection in or around the joint
4. Known sensitivity to materials used in this device



SBI's Elbow Management System (EMS) includes:

- rHead radial head arthroplasty family
- rHead plating system
- AutoFIX™ – headless cannulated screws
- UNI-Elbow- only radio capitellum replacement commercially available

SBi
SMALL BONE INNOVATIONS, INC.

Small Bone Innovations International
ZA Les Bruyères - BP 28
01960 Péronnas, France
Tel: +33 (0) 474 21 58 19
Fax: +33 (0) 474 21 43 12

Small Bone Innovations, Inc.
1380 S. Pennsylvania Avenue
Morrisville, PA 19067
(215) 428-1791 / Fax (215) 428-1795
SBI Customer Service: (800) 778-8837
Technical Support: (866) SBI-TIPS

Small Bone Innovations Asia Pacific Sdn. Bhd.
B-12-01, Level 12, Block B East
Menara PJ8, No. 23 Jalan Barat,
Seksyen 8, 46050 Petaling Jaya
Selangor Darul Ehsan, Malaysia
Tel. +6 03 796 04 828
Fax: +6 03 796 04 626

Caution: United States federal law restricts this device to sale by or on the order of a physician.
Copyright© 2011 Small Bone Innovations, Inc.
All rights reserved.

To learn more please visit
www.totalsmallbone.com